

thermo scientific



Meet your separation needs

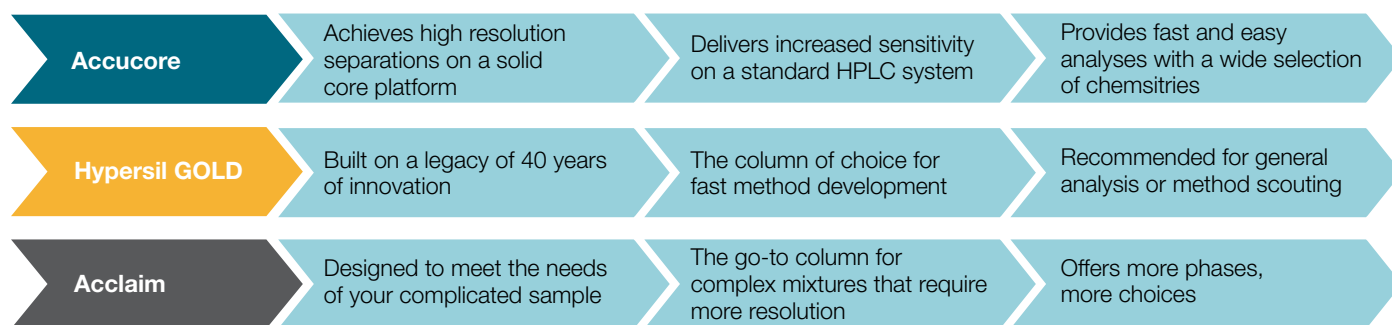
Analytical UHPLC and HPLC columns

Find it at eu.fishersci.com

 **fisher** scientific
part of Thermo Fisher Scientific

Analytical chromatography separations are very diverse. The portfolio of Thermo Scientific™ UHPLC and HPLC high resolution, high throughput columns is designed to meet your unique challenges. With a wide range of innovative column chemistries and size formats, we provide you the most complementary column for your separation. This guide will introduce you to our broad range of reversed-phase chemistries and column families.

Which Thermo Scientific columns meets your separation needs?



Accucore HPLC and UHPLC columns

Thermo Scientific™ Accucore™ columns are based on solid core (superficially porous) particles yielding highly efficient, rugged separations for high performance liquid chromatography (HPLC) and liquid chromatography-mass spectrometry (LC-MS) applications. They offer lower backpressures than fully porous sub-2 µm particles. These are the columns of choice when sample volumes are limited, or when higher throughput is desired.

We offer the widest portfolio of solid core chemistries (1.5, 2.6, 4 µm), which benefits you with options to optimize your resolution and separations.

Hypersil GOLD HPLC and UHPLC columns

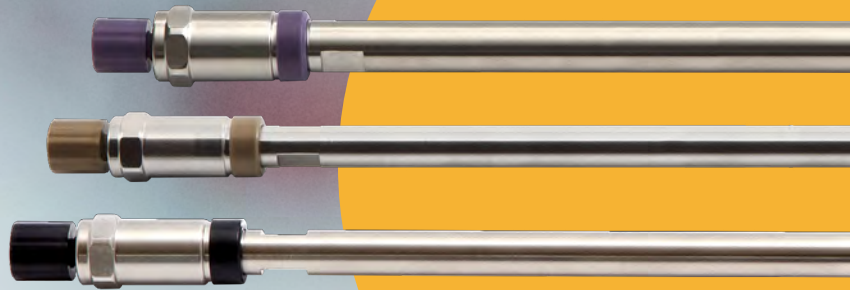
These general-purpose columns for HPLC and LC-MS applications provide exceptional peak shape affording confidence in your analytical data. With minimal peak tailing, these columns are packed to achieve exceptional efficiency, peak shape and resolution.

Thermo Scientific™ Hypersil GOLD™ columns offer a broad range of phases and particle sizes (1.9, 3, 5 µm). They are your go-to column for starting method development.

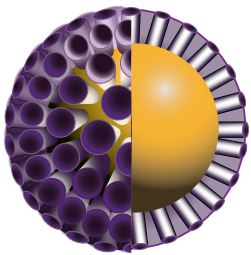
Acclaim HPLC and UHPLC columns

For complex samples requiring higher resolution, Thermo Scientific™ Acclaim™ columns offer unique chemistries for high performance. Featuring high surface area for greater resolution, these columns provide confidence in quantitative data for LC-MS and HPLC analysis.

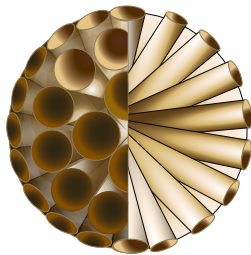
Column selections range from C18 to mixed-mode (2.2, 3, 5 µm) which provide the diversity you need to solve your complicated sample separations.



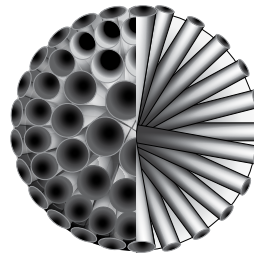
UHPLC and HPLC columns portfolio



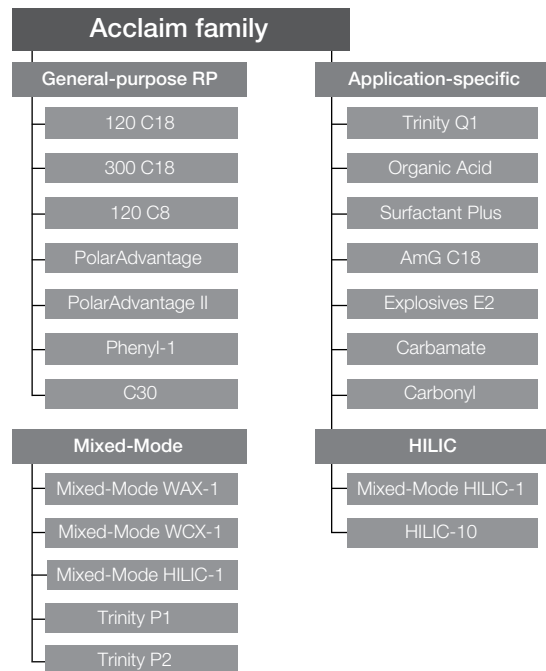
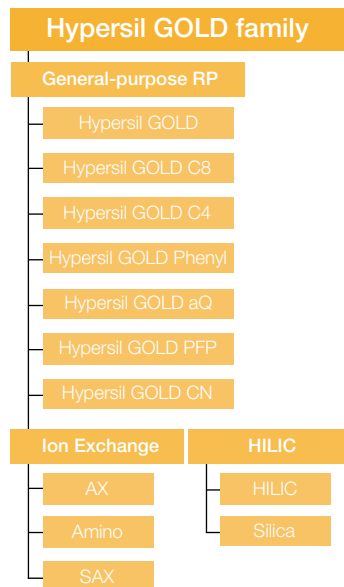
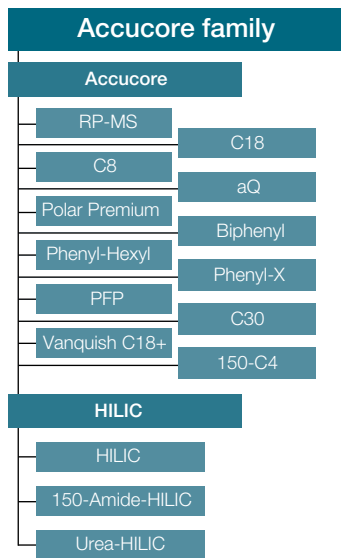
Solid core. High throughput. High resolution.



Excellent resolution. Efficiency. Sensitivity.



Superior resolution for challenging samples.



Column chemistry selection— which column family is right for your application?

Hydrophobic capacity is an important consideration when choosing a C18 column. When adapting a method from a different column or developing a new method, surface area and carbon load must be considered, as they provide the primary source for analyte retention on the column.

The **Hypersil GOLD column** is fully porous with low hydrophobic capacity (10% carbon load) resulting in fast run times. It is a great starting point for high efficiency separations of low to moderate complexity samples.

The **Acclaim 120 C18 column** is fully porous with a higher hydrophobic capacity (18% carbon load). This column delivers high resolution through hydrophobic retention. The Acclaim family is designed around specialty chemistries to resolve complicated samples.

The solid core **Accucore column** family includes both low and high hydrophobic capacity options (RP-MS and C18). The Accucore column line takes the best surface chemistries of the Hypersil GOLD and Acclaim column families and puts them on a solid core support for users looking for high resolution separations without elevated backpressures of a sub-2 μm particle.

To help you determine the carbon load or surface area of our columns, please visit thermofisher.com/lccolumns. This site offers many technical details and resources on our C18 phases and guidance on how to select a mixed-mode or specialty phase.

Quick guide to choosing a phase

		C18	Polar Phases	Aromatic	HILIC
Low to moderate complexity sample	Fully porous	Hypersil GOLD columns	Hypersil GOLD aQ columns	Hypersil GOLD PFP columns	Hypersil GOLD HILIC columns
	Solid core	Accucore RP-MS columns	Accucore aQ columns	Accucore Phenyl-Hexyl columns	Accucore HILIC columns
Moderate to high complexity sample	Fully porous	Acclaim 120 C18 columns	Acclaim Polar Advantage II columns	Acclaim Phenyl-1 columns	Acclaim HILIC-10 columns
	Solid core	Accucore C18 columns	Accucore Polar Premium columns	Accucore Biphenyl columns	Accucore Amide-HILIC columns

Find out more at www.thermofisher.com/go/thermochrom

Contact us today:

Austria: +43(0)800-20 88 40 Belgium: +32 (0)56 260 260 Denmark: +45 70 27 99 20
 Germany: +49 (0)2304 9325 Ireland: +353 (0)1 885 5854 Italy: +39 02 950 59 478
 Finland: +358 (0)9 8027 6280 France: +33 (0)3 88 67 14 14 Netherlands: +31 (0)20 487 70 00
 Norway: +47 22 95 59 59 Portugal: +351 21 425 33 50 Spain: +34 902 239 303
 Sweden: +46 31 352 32 00 Switzerland: +41 (0)56 618 41 11 UK: +44 (0)1509 555 500

